



Kest-Lock

The super user friendly Aseptic quick connection for tanks and pipes

DS-000009 REV C

Kest-Lock - Just snap and tighten

Our patented Kest-lock design unites the advantages of a traditional TC-clamp with an aseptic tank or pipe connection, in a new innovative design.

Kest-Lock with the unique quick coupling don't require any tools, have no loose parts and can easily be operated with one hand.

Kest-Lock is developed for critical applications where aseptic design, easy and safe handling are essentials.

To suit your needs, we have developed a broad range of different flanges for the Kest-Lock rings.

For special requests of specific materials or tube standards of the flanges, please contact your reseller for a quote.

Kest-Lock is designed according to criteria of ASME BPE, in accordance to surface finish, material, clean ability, dimensions and aseptic design.

Kest-Lock are designed to fit to clamp ferrules according to ISO 2852, ASME BPE and DIN 32 676.

The Kest-Lock ring is available in two different types: The Snap and the Basic.

The Kest-Lock Snap with the unique snap function for one hand operation - the super user friendly aseptic connection.

The Kest-Lock Basic is a similar version for static connections, with no loose parts and are tightened from the side to not interfere with your devices.

General information

Standards

The Kest-Lock is available in most common pipe standard for the Pharmaceutical and Food industry. TC sizes from TC25 to TC119 is available.

ASTM A 269/270
 ISO 1127
 EN 10357 (DIN 11850)*
 SMS 3008
 JS IDF

*DIN 11850 has been replaced by EN 10357

Table of Content

See on what page you can find the product/ products you are searching for.

Kest-Lock Snap Ring	Page 4
Kest-Lock Basic Ring	Page 4
Kest-Lock Tank Flange	Page 6
Kest-Lock Pipe Flange	Page 18
Kest-Lock Pipe Adapter Flange	Page 21
Kest-Lock Pipe Panel Flange	Page 24
Kest-Lock Pipe Inline	Page 26
Kest-Lock Pipe Inline Double	Page 28
Blind TC with knob	Page 30

Product description

Kest-Lock Snap Ring	A unique user friendly connection that allows you to connect a TC device using only one hand, no tools required. Perfect if you need to connect and disconnect often.
Kest-Lock Basic Ring	A unique user friendly connection that allows you to connect a TC device in a very smart way. No loose parts and minimal overhead space required, perfect for static connections.
Kest-Lock Tank Flange	When you want to have a Kest-Lock connection on your tank you weld in the tank flange and attach the Kest-Lock Connection on it. Make sure you use our welding tools.
Kest-Lock Pipe Flange	When you want to have a Kest-Lock connection straight on a pipe you weld on the pipe flange and attach the Kest-Lock Connection on it.
Kest-Lock Pipe Adapter Flange	When you have two TC connections and want to use the Kest-Lock you attach the pipe adapter flange on one TC and attach the Kest-Lock to the pipe adapter flange.
Kest-Lock Pipe Panel Flange	When you want to have a Kest-Lock connection on a swing panel you weld on the pipe panel flange and attach the Kest-Lock Connection on it.
Kest-Lock Pipe Inline	When you want to have a Kest-Lock connection on a pipe you weld on the pipe inline flange and attach the Kest-Lock Connection on it.
Kest-Lock Pipe Inline Double	When you want to have two Kest-Lock connection on a pipe you weld on the pipe inline double flange and attach the Kest-Lock Connection on it.
Blind TC with knob	When you want to have a blind cap on your Kest-Lock. It is equipped with a small knob to make it easy to remove.



YOU HAVE TO USE A STANDARD GASKET ISO 2852 type B



ISO 2852 type B



ISO 2852 type A




DON'T PRESSURIZE THE SYSTEM UNTIL YOU HAVE TIGHTEN THE KEST-LOCK.

General information


How to combine the parts






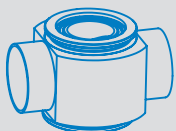
Choose your pipe standard and look up the corresponding flange. The TC Size on the flange will determine the size on the Kest-Lock ring that shall have the same corresponding TC size.



		
Kest-Lock Tank Flange	Kest-Lock Pipe Adapter Flange	Kest-Lock Pipe Inline
		
Kest-Lock Pipe Flange	Kest-Lock Pipe Panel Flange	Kest-Lock Pipe Inline Double

Kest-Lock Snap Ring + Kest-Lock Tank Flange, Kest-Lock Pipe Flange, Kest-Lock Pipe Adapter Flange, Kest-Lock Pipe Panel Flange, Kest-Lock Pipe Inline or Kest-Lock Pipe Inline Double



		
Kest-Lock Tank Flange	Kest-Lock Pipe Adapter Flange	Kest-Lock Pipe Inline
		
Kest-Lock Pipe Flange	Kest-Lock Pipe Panel Flange	Kest-Lock Pipe Inline Double

Kest-Lock Basic Ring + Kest-Lock Tank Flange, Kest-Lock Pipe Flange, Kest-Lock Pipe Adapter Flange, Kest-Lock Pipe Panel Flange, Kest-Lock Pipe Inline or Kest-Lock Pipe Inline Double

Kest-Lock Snap and Basic

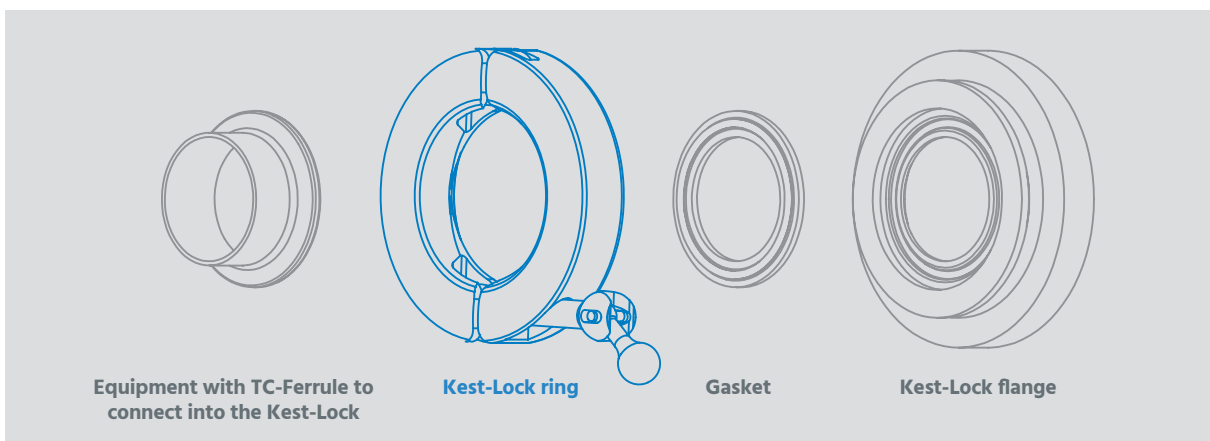
SPECIFICATIONS

Material Grade	EN 1.4404	ASTM 316L or ASME 316L
Material requirement	EN 10 272/10028-7	A479/A240 or SA479/SA240
Documentation	Heat Certificate 3.1 acc. to EN 10 204	
Surface finish	Ra≤1.6 μm (Snap version, outer surface polished. Basic version, outer surface grinded)	
Design Temperature	[-80°C to 200°C] [112°F to 392°F]	
Design Pressure	[-1 bar(g) to + 7 bar(g)] [-14.5 psi to 101.5 psi]	
Marking	Marked with brand, material grade, product code and heat number	
Packing	Sealed in vacuum plastic bag, labelled with art.number and packed in a box	
Gaskets	The Kest-Lock is designed for use of standard gaskets acc. to ISO 2852 type B	
Standard	The Kest-Lock is designed for clamp couplings acc ISO 2852, ASME BPE, DIN 32 676	
Quality Assurance	Each product is controlled and tested acc. to Kest Technology quality assurance system	

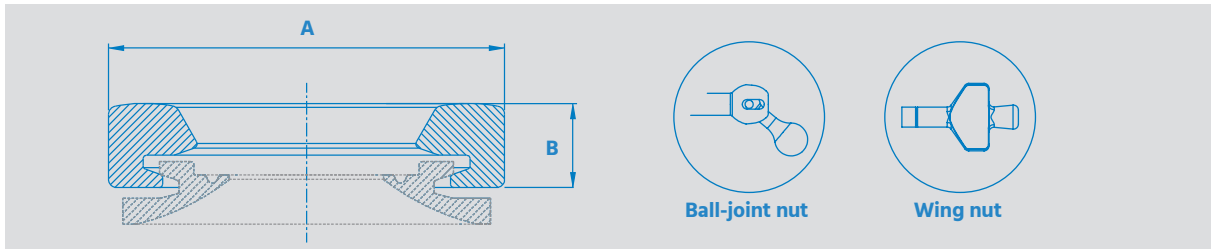
Kest-Lock Snap Ring



Kest-Lock Basic Ring

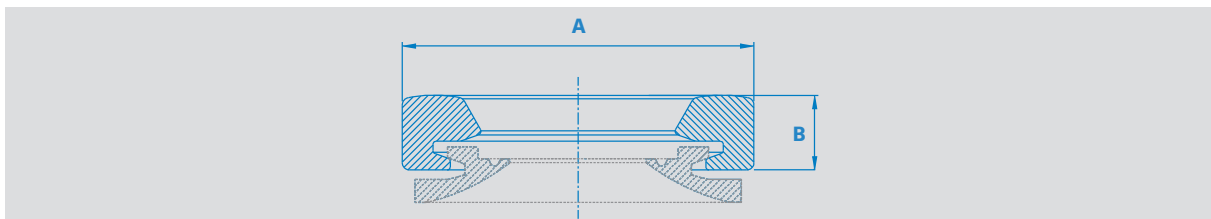


Kest-Lock Snap Ring



REF. NO	PRODUCT CODE	TC mm	A mm	B mm
Kest-Lock Snap ring with ball-joint nut				
100012	KLS-TC25-BJN	25.0	59	20
100013	KLS-TC34-BJN	34.0	70	20
100014	KLS-TC50-BJN	50.5	85	20
100015	KLS-TC64-BJN	64.0	99	20
100016	KLS-TC77-BJN	77.5	112	22
100017	KLS-TC91-BJN	91.0	126	22
100018	KLS-TC106-BJN	106.0	146	22
100024	KLS-TC119-BJN	119	158.5	24.5
Kest-Lock Snap ring with wing nut				
100316	KLS-TC25-WN	25.0	59	20
101192	KLS-TC34-WN	34.0	70	20
100297	KLS-TC50-WN	50.5	85	20
100323	KLS-TC64-WN	64.0	99	20
100459	KLS-TC77-WN	77.5	112	22

Kest-Lock Basic Ring

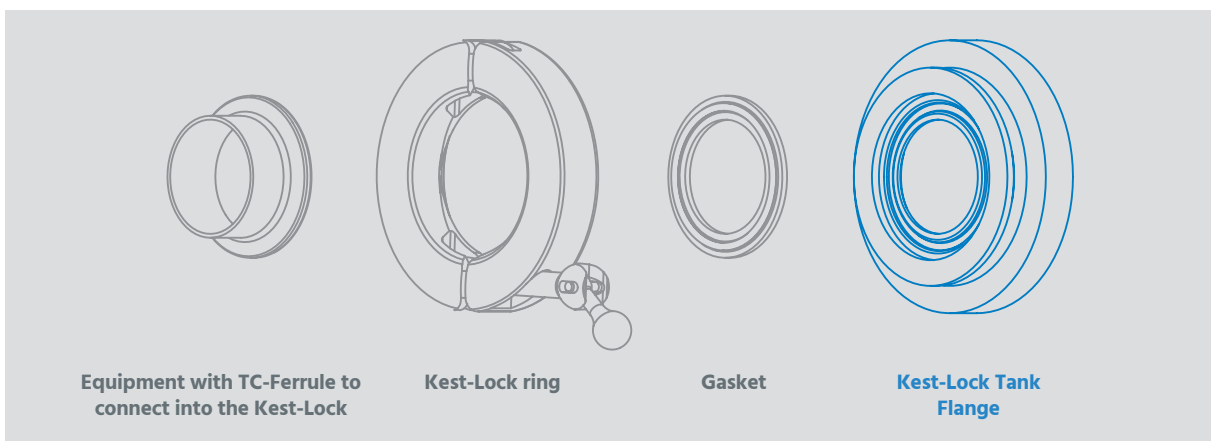
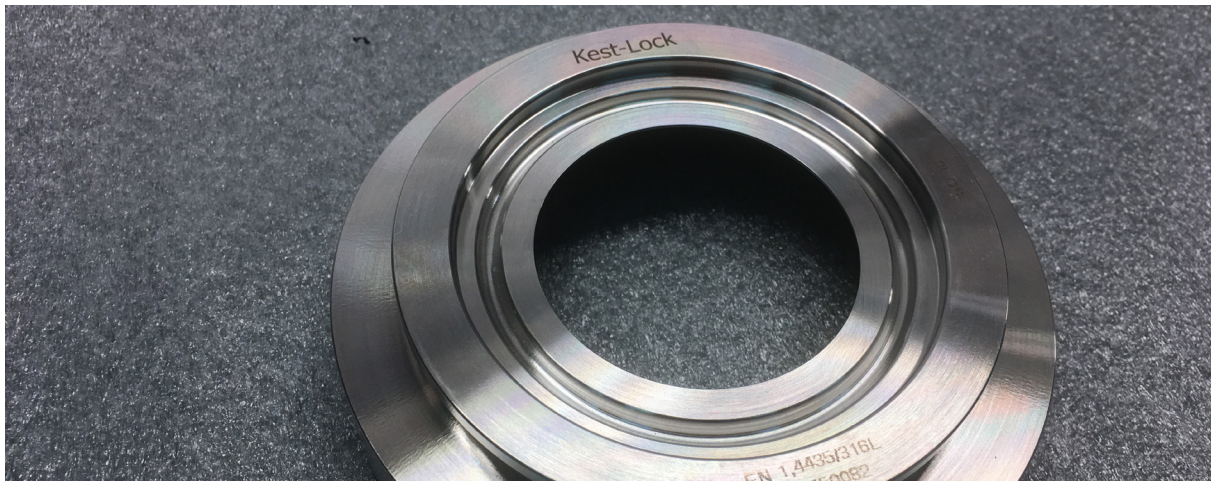


REF. NO	PRODUCT CODE	TC mm	A mm	B mm
100025	KLB-TC25-IHS	25.0	59	20
100026	KLB-TC34-IHS	34.0	70	20
100027	KLB-TC50-IHS	50.5	85	20
100028	KLB-TC64-IHS	64.0	99	20
100029	KLB-TC77-IHS	77.5	112	22
100030	KLB-TC91-IHS	91.0	126	22
100031	KLB-TC106-IHS	106.0	146	22
100032	KLB-TC119-IHS	119.0	158.5	24.5

Kest-Lock Tank Flange

SPECIFICATIONS

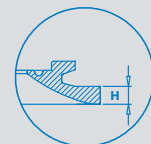
Material Grade	EN 1.4435	ASTM 316L or ASME 316L
Material requirement	EN 10 272/10028-7	A479/A240 or SA479/SA240
Documentation	Heat Certificate 3.1 acc. to EN 10 204	
Surface finish	Ra≤0.5 µm internal (polished)	Ra≤1.6 µm outer
Design Temperature	[-80°C to 200°C] [112°F to 392°F]	
Design Pressure	[-1 bar(g) to + 7 bar(g)] [-14.5 psi to 101.5 psi]	
Marking	Marked with material grade and heat number	
Packing	Sealed in vacuum plastic bag, labelled with art. number and packed in a box	
Gaskets	The Kest-Lock is designed for use of standard gaskets acc. to ISO 2852 type B	
Standards	The Kest-Lock is designed for clamp couplings acc ISO 2852, ASME BPE, DIN 32 676	
Quality Assurance	Each product is controlled and tested acc. to Kest Technology quality assurance system	



The Kest-Lock tank flange is available in five different heights to fit your tank geometry, from 6 mm to 51 mm.

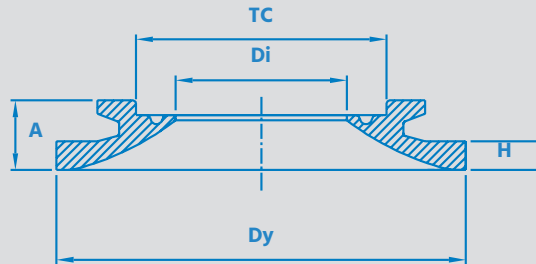
H 6 mm
H 12 mm
H 25 mm

H 38 mm
H 51 mm



Kest-Lock Tank Flange

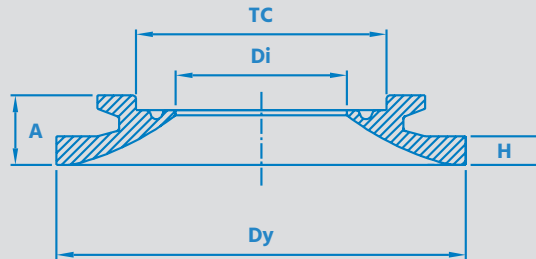
**ASTM
A 269/270**



REF. NO	PRODUCT CODE	TC mm	DY mm	DI mm	H mm	A mm
TC 1/2" (TC25) - For pipe ASTM 1/2" (12.7x1.65)						
100068	KLTF-TC25-ASTM0.5-55-6	25	55	9.4	6	14.5
100069	KLTF-TC25-ASTM0.5-55-12	25	55	9.4	12	20.5
100070	KLTF-TC25-ASTM0.5-55-25	25	55	9.4	25	33.5
100071	KLTF-TC25-ASTM0.5-55-38	25	55	9.4	38	46.5
100072	KLTF-TC25-ASTM0.5-55-51	25	55	9.4	51	59.5
TC 3/4" (TC25) - For pipe ASTM 3/4" (19.1x1.65)						
100073	KLTF-TC25-ASTM0.75-55-6	25	55	15.8	6	14.5
100074	KLTF-TC25-ASTM0.75-55-12	25	55	15.8	12	20.5
100075	KLTF-TC25-ASTM0.75-55-25	25	55	15.8	25	33.5
100076	KLTF-TC25-ASTM0.75-55-38	25	55	15.8	38	46.5
100077	KLTF-TC25-ASTM0.75-55-51	25	55	15.8	51	59.5
TC 1" (TC50.5) - For pipe ASTM 1" (25.4x1.65)						
100078	KLTF-TC50-ASTM1.0-85-6	50.5	85	22.1	6	14.5
100079	KLTF-TC50-ASTM1.0-85-12	50.5	85	22.1	12	20.5
100080	KLTF-TC50-ASTM1.0-85-25	50.5	85	22.1	25	33.5
100081	KLTF-TC50-ASTM1.0-85-38	50.5	85	22.1	38	46.5
100082	KLTF-TC50-ASTM1.0-85-51	50.5	85	22.1	51	59.5
TC 1 1/2" (TC50.5) - For pipe ASTM 1 1/2" (38.1x1.65)						
100083	KLTF-TC50-ASTM1.5-85-6	50.5	85	34.8	6	14.5
100084	KLTF-TC50-ASTM1.5-85-12	50.5	85	34.8	12	20.5
100085	KLTF-TC50-ASTM1.5-85-25	50.5	85	34.8	25	33.5
100086	KLTF-TC50-ASTM1.5-85-38	50.5	85	34.8	38	46.5
100087	KLTF-TC50-ASTM1.5-85-51	50.5	85	34.8	51	59.5
TC 2" (TC64) - For pipe ASTM 2" (50.8x1.65)						
100088	KLTF-TC64-ASTM2.0-100-6	64	100	47.5	6	14.5
100089	KLTF-TC64-ASTM2.0-100-12	64	100	47.5	12	20.5
100090	KLTF-TC64-ASTM2.0-100-25	64	100	47.5	25	33.5
100091	KLTF-TC64-ASTM2.0-100-38	64	100	47.5	38	46.5
100092	KLTF-TC64-ASTM2.0-100-51	64	100	47.5	51	59.5

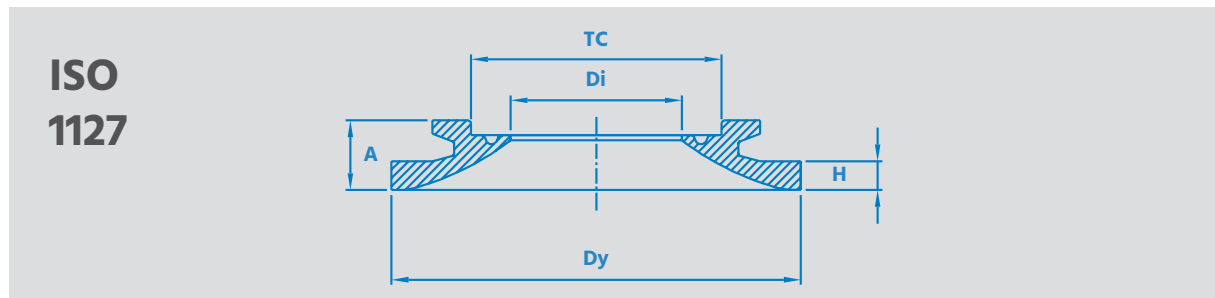
Kest-Lock Tank Flange

**ASTM
A 269/270**



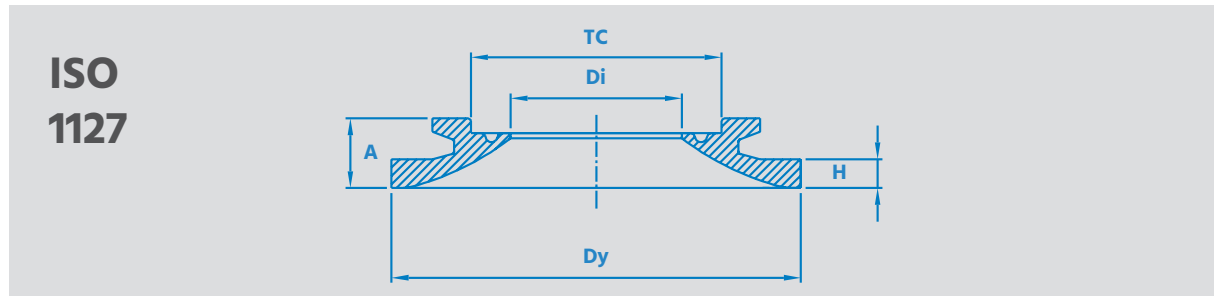
REF. NO	PRODUCT CODE	TC mm	DY mm	DI mm	H mm	A mm
TC 2.5" (TC77.5) - For pipe ASTM 2.5" (63.5x1.65)						
100093	KLTF-TC77-ASTM2.5-112-6	77.5	112	60.2	6	14.5
100094	KLTF-TC77-ASTM2.5-112-12	77.5	112	60.2	12	20.5
100095	KLTF-TC77-ASTM2.5-112-25	77.5	112	60.2	25	33.5
100096	KLTF-TC77-ASTM2.5-112-38	77.5	112	60.2	38	46.5
100097	KLTF-TC77-ASTM2.5-112-51	77.5	112	60.2	51	59.5
TC 3" (TC91) - For pipe ASTM 3" (76.2x1.65)						
100098	KLTF-TC91-ASTM3.0-131-6	91	131	72.9	6	14.5
100099	KLTF-TC91-ASTM3.0-131-12	91	131	72.9	12	20.5
100100	KLTF-TC91-ASTM3.0-131-25	91	131	72.9	25	33.5
100101	KLTF-TC91-ASTM3.0-131-38	91	131	72.9	38	46.5
100102	KLTF-TC91-ASTM3.0-131-51	91	131	72.9	51	59.5
TC 4"(TC119) - For pipe ASTM 4" (101.6x2.1)						
100637	KLTF-TC119-ASTM-4.0-159-6	119	159	97.4	6	14.5
100638	KLTF-TC119-ASTM-4.0-159-12	119	159	97.4	12	20.5
101621	KLTF-TC119-ASTM-4.0-159-25	119	159	97.4	25	33.5
101109	KLTF-TC119-ASTM-4.0-159-38	119	159	97.4	38	46.5
101622	KLTF-TC119-ASTM-4.0-159-51	119	159	97.4	51	59.5

Kest-Lock Tank Flange



REF. NO	PRODUCT CODE	TC mm	DY mm	DI mm	H mm	A mm
TC25 - For pipe ISO DN8 (13.5x1.6)						
100104	KLTF-TC25-ISO8-55-6	25	55	10.3	6	14.5
100105	KLTF-TC25-ISO8-55-12	25	55	10.3	12	20.5
100106	KLTF-TC25-ISO8-55-25	25	55	10.3	25	33.5
100107	KLTF-TC25-ISO8-55-38	25	55	10.3	38	46.5
100108	KLTF-TC25-ISO8-55-51	25	55	10.3	51	59.5
TC34 - For pipe ISO DN10 (17.2x1.6)						
100109	KLTF-TC34-ISO10-70-6	34	70	14.0	6	14.5
100110	KLTF-TC34-ISO10-70-12	34	70	14.0	12	20.5
100111	KLTF-TC34-ISO10-70-25	34	70	14.0	25	33.5
100112	KLTF-TC34-ISO10-70-38	34	70	14.0	38	46.5
100113	KLTF-TC34-ISO10-70-51	34	70	14.0	51	59.5
TC34 - For pipe ISO DN15 (21.3x1.6)						
100114	KLTF-TC34-ISO15-70-6	34	70	18.1	6	14.5
100115	KLTF-TC34-ISO15-70-12	34	70	18.1	12	20.5
100116	KLTF-TC34-ISO15-70-25	34	70	18.1	25	33.5
100117	KLTF-TC34-ISO15-70-38	34	70	18.1	38	46.5
100118	KLTF-TC34-ISO15-70-51	34	70	18.1	51	59.5
TC50.5 - For pipe ISO DN20 (26.9x1.6)						
100119	KLTF-TC50-ISO20-85-6	50.5	85	23.7	6	14.5
100120	KLTF-TC50-ISO20-85-12	50.5	85	23.7	12	20.5
100121	KLTF-TC50-ISO20-85-25	50.5	85	23.7	25	33.5
100122	KLTF-TC50-ISO20-85-38	50.5	85	23.7	38	46.5
100123	KLTF-TC50-ISO20-85-51	50.5	85	23.7	51	59.5
TC50.5 - For pipe ISO DN25 (33.7x2.0)						
100124	KLTF-TC50-ISO25-85-6	50.5	85	29.7	6	14.5
100125	KLTF-TC50-ISO25-85-12	50.5	85	29.7	12	20.5
100126	KLTF-TC50-ISO25-85-25	50.5	85	29.7	25	33.5
100127	KLTF-TC50-ISO25-85-38	50.5	85	29.7	38	46.5
100128	KLTF-TC50-ISO25-85-51	50.5	85	29.7	51	59.5

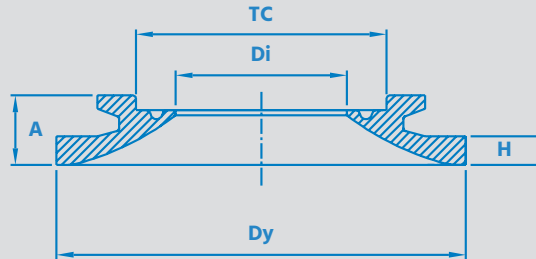
Kest-Lock Tank Flange



REF. NO	PRODUCT CODE	TC mm	DY mm	DI mm	H mm	A mm
TC64 - For pipe ISO DN32 (42.4x2.0)						
100129	KLTF-TC64-ISO32-100-6	64	100	38.4	6	14.5
100130	KLTF-TC64-ISO32-100-12	64	100	38.4	12	20.5
100131	KLTF-TC64-ISO32-100-25	64	100	38.4	25	33.5
100132	KLTF-TC64-ISO32-100-38	64	100	38.4	38	46.5
100133	KLTF-TC64-ISO32-100-51	64	100	38.4	51	59.5
TC64 - For pipe ISO DN40 (48.3x2.0)						
100134	KLTF-TC64-ISO40-100-6	64	100	44.3	6	14.5
100135	KLTF-TC64-ISO40-100-12	64	100	44.3	12	20.5
100136	KLTF-TC64-ISO40-100-25	64	100	44.3	25	33.5
100137	KLTF-TC64-ISO40-100-38	64	100	44.3	38	46.5
100138	KLTF-TC64-ISO40-100-51	64	100	44.3	51	59.5
TC77.5 - For pipe ISO DN50 (60.3x2.0)						
100139	KLTF-TC77-ISO50-112-6	77.5	112	56.3	6	14.5
100140	KLTF-TC77-ISO50-112-12	77.5	112	56.3	12	20.5
100141	KLTF-TC77-ISO50-112-25	77.5	112	56.3	25	33.5
100142	KLTF-TC77-ISO50-112-38	77.5	112	56.3	38	46.5
100143	KLTF-TC77-ISO50-112-51	77.5	112	56.3	51	59.5
TC91, For pipe ISO DN65 (76.1x2.3)						
100144	KLTF-TC91-ISO65-131-6	91	131	71.5	6	14.5
100145	KLTF-TC91-ISO65-131-12	91	131	71.5	12	20.5
100146	KLTF-TC91-ISO65-131-25	91	131	71.5	25	33.5
100147	KLTF-TC91-ISO65-131-38	91	131	71.5	38	46.5
100148	KLTF-TC91-ISO65-131-51	91	131	71.5	51	59.5
TC106 - For pipe ISO DN80 (88.9x2.3)						
100279	KLTF-TC106-ISO80-146-6	106	146	84.3	6	14.5
100280	KLTF-TC106-ISO80-146-12	106	146	84.3	12	20.5
100247	KLTF-TC106-ISO80-146-25	106	146	84.3	25	33.5
100250	KLTF-TC106-ISO80-146-38	106	146	84.3	38	46.5
101623	KLTF-TC106-ISO80-146-51	106	146	84.3	51	59.5

Kest-Lock Tank Flange

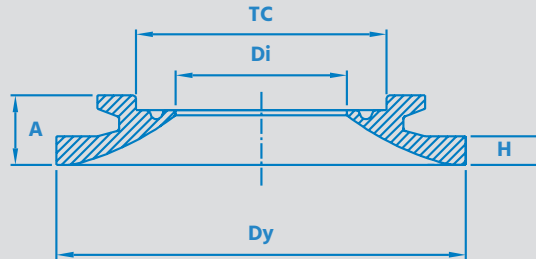
EN 10357-A
(DIN 11850-R2)



REF. NO	PRODUCT CODE	TC mm	DY mm	DI mm	H mm	A mm
TC34 - For pipe EN DN10 (13 x 1.5)						
101687	KLTF-TC34-EN10-70-6	34	70	10	6	14.5
101688	KLTF-TC34-EN10-70-12	34	70	10	12	20.5
101689	KLTF-TC34-EN10-70-25	34	70	10	25	33.5
101690	KLTF-TC34-EN10-70-38	34	70	10	38	46.5
101691	KLTF-TC34-EN10-70-51	34	70	10	51	59.5
TC34 - For pipe EN DN15 (19 x 1.5)						
101692	KLTF-TC34-EN15-70-6	34	70	16	6	14.5
101693	KLTF-TC34-EN15-70-12	34	70	16	12	20.5
101694	KLTF-TC34-EN15-70-25	34	70	16	25	33.5
101695	KLTF-TC34-EN15-70-38	34	70	16	38	46.5
101696	KLTF-TC34-EN15-70-51	34	70	16	51	59.5
TC34 - For pipe EN DN20 (23 x 1.5)						
101683	KLTF-TC34-EN20-70-6	34	70	20	6	14.5
101684	KLTF-TC34-EN20-70-12	34	70	20	12	20.5
101685	KLTF-TC34-EN20-70-25	34	70	20	25	33.5
101141	KLTF-TC34-EN20-70-38	34	70	20	38	46.5
101686	KLTF-TC34-EN20-70-51	34	70	20	51	59.5
TC50.5 - For pipe EN DN25 (29 x 1.5)						
101274	KLTF-TC50-EN25-85-6	50.5	85	26	6	14.5
101680	KLTF-TC50-EN25-85-12	50.5	85	26	12	20.5
101681	KLTF-TC50-EN25-85-25	50.5	85	26	25	33.5
101142	KLTF-TC50-EN25-85-38	50.5	85	26	38	46.5
101682	KLTF-TC50-EN25-85-51	50.5	85	26	51	59.5
TC50.5 - For pipe EN DN32 (35 x 1.5)						
101677	KLTF-TC50-EN32-85-6	50.5	85	32	6	14.5
101678	KLTF-TC50-EN32-85-12	50.5	85	32	12	20.5
101143	KLTF-TC50-EN32-85-25	50.5	85	32	25	33.5
101679	KLTF-TC50-EN32-85-38	50.5	85	32	38	46.5
101457	KLTF-TC50-EN32-85-51	50.5	85	32	51	59.5

Kest-Lock Tank Flange

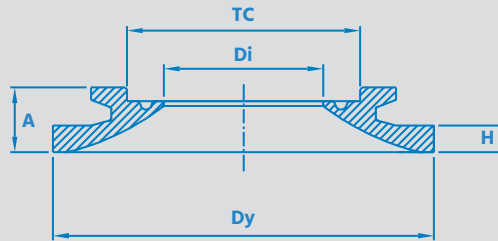
EN 10357-A
(DIN 11850-R2)



REF. NO	PRODUCT CODE	TC mm	DY mm	DI mm	H mm	A mm
TC50.5 - For pipe EN DN40 (41 x 1.5)						
101673	KLTF-TC50-EN40-85-6	50.5	85	38	6	14.5
101144	KLTF-TC50-EN40-85-12	50.5	85	38	12	20.5
101624	KLTF-TC50-EN40-85-25	50.5	85	38	25	33.5
101675	KLTF-TC50-EN40-85-38	50.5	85	38	38	46.5
101676	KLTF-TC50-EN40-85-51	50.5	85	38	51	59.5
TC64 - For pipe EN DN50 (53 x 1.5)						
101665	KLTF-TC64-EN50-100-6	64	100	50	6	14.5
101145	KLTF-TC64-EN50-100-12	64	100	50	12	20.5
101666	KLTF-TC64-EN50-100-25	64	100	50	25	33.5
101667	KLTF-TC64-EN50-100-38	64	100	50	38	46.5
101146	KLTF-TC64-EN50-100-51	64	100	50	51	59.5
TC91 - For pipe EN DN65 (70 x 2.0)						
101668	KLTF-TC91-EN65-131-6	91	131	66	6	14.5
101669	KLTF-TC91-EN65-131-12	91	131	66	12	20.5
101670	KLTF-TC91-EN65-131-25	91	131	66	25	33.5
101671	KLTF-TC91-EN65-131-38	91	131	66	38	46.5
101672	KLTF-TC91-EN65-131-51	91	131	66	51	59.5
TC106 - For pipe EN DN80 (85 x 2.0)						
101432	KLTF-TC106-EN80-146-6	106	146	81	6	14.5
101433	KLTF-TC106-EN80-146-12	106	146	81	12	20.5
101434	KLTF-TC106-EN80-146-25	106	146	81	25	33.5
101663	KLTF-TC106-EN80-146-38	106	146	81	38	46.5
101664	KLTF-TC106-EN80-146-51	106	146	81	51	59.5

Kest-Lock Tank Flange

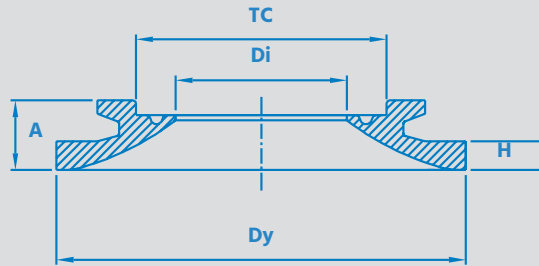
**SMS
3008**



REF. NO	PRODUCT CODE	TC mm	DY mm	DI mm	H mm	A mm
TC25 - For pipe SMS 12x1.0						
100033	KLTF-TC25-SMS12-55-6	25	55	10	6	14.5
100034	KLTF-TC25-SMS12-55-12	25	55	10	12	20.5
100035	KLTF-TC25-SMS12-55-25	25	55	10	25	33.5
100036	KLTF-TC25-SMS12-55-38	25	55	10	38	46.5
100037	KLTF-TC25-SMS12-55-51	25	55	10	51	59.5
TC25 - For pipe SMS 18x1.5						
100038	KLTF-TC25-SMS18-55-6	25	55	15	6	14.5
100039	KLTF-TC25-SMS18-55-12	25	55	15	12	20.5
100040	KLTF-TC25-SMS18-55-25	25	55	15	25	33.5
100041	KLTF-TC25-SMS18-55-38	25	55	15	38	46.5
100042	KLTF-TC25-SMS18-55-51	25	55	15	51	59.5
TC50.5 - For pipe SMS 25x1.2						
100043	KLTF-TC50-SMS25-85-6	50.5	85	22.6	6	14.5
100044	KLTF-TC50-SMS25-85-12	50.5	85	22.6	12	20.5
100045	KLTF-TC50-SMS25-85-25	50.5	85	22.6	25	33.5
100046	KLTF-TC50-SMS25-85-38	50.5	85	22.6	38	46.5
100047	KLTF-TC50-SMS25-85-51	50.5	85	22.6	51	59.5
TC50.5 - For pipe SMS 38x1.2						
100048	KLTF-TC50-SMS38-85-6	50.5	85	35.6	6	14.5
100049	KLTF-TC50-SMS38-85-12	50.5	85	35.6	12	20.5
100050	KLTF-TC50-SMS38-85-25	50.5	85	35.6	25	33.5
100051	KLTF-TC50-SMS38-85-38	50.5	85	35.6	38	46.5
100052	KLTF-TC50-SMS38-85-51	50.5	85	35.6	51	59.5
TC64 - For pipe SMS 51x1.2						
100053	KLTF-TC64-SMS51-100-6	64	100	48.6	6	14.5
100054	KLTF-TC64-SMS51-100-12	64	100	48.6	12	20.5
100055	KLTF-TC64-SMS51-100-25	64	100	48.6	25	33.5
100056	KLTF-TC64-SMS51-100-38	64	100	48.6	38	46.5
100057	KLTF-TC64-SMS51-100-51	64	100	48.6	51	59.5

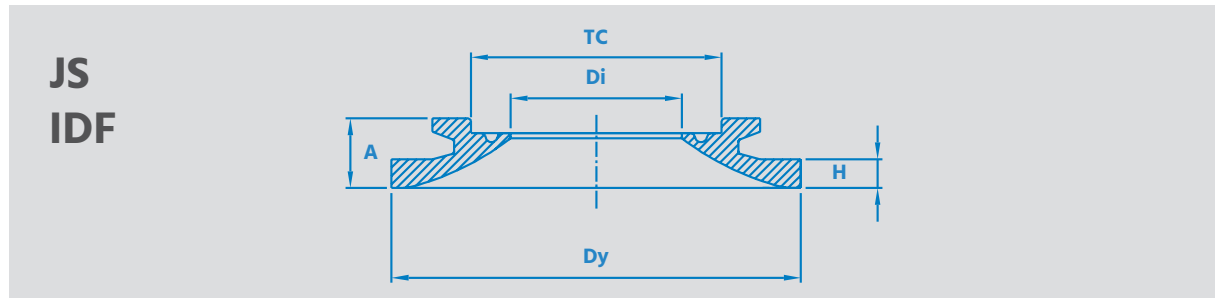
Kest-Lock Tank Flange

**SMS
3008**



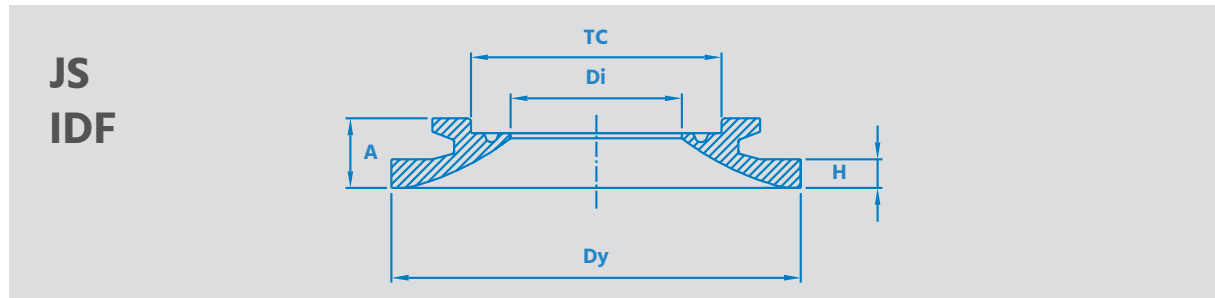
REF. NO	PRODUCT CODE	TC mm	DY mm	DI mm	H mm	A mm
TC77.5 - For pipe SMS 63.5x1.6						
100058	KLTF-TC77-SMS63-112-6	77.5	112	60.3	6	14.5
100059	KLTF-TC77-SMS63-112-12	77.5	112	60.3	12	20.5
100060	KLTF-TC77-SMS63-112-25	77.5	112	60.3	25	33.5
100061	KLTF-TC77-SMS63-112-38	77.5	112	60.3	38	46.5
100062	KLTF-TC77-SMS63-112-51	77.5	112	60.3	51	59.5
TC91 - For pipe SMS 76.1x1.6						
100063	KLTF-TC91-SMS76-131-6	91	131	72.9	6	14.5
100064	KLTF-TC91-SMS76-131-12	91	131	72.9	12	20.5
100065	KLTF-TC91-SMS76-131-25	91	131	72.9	25	33.5
100066	KLTF-TC91-SMS76-131-38	91	131	72.9	38	46.5
100067	KLTF-TC91-SMS76-131-51	91	131	72.9	51	59.5

Kest-Lock Tank Flange



REF. NO	PRODUCT CODE	TC mm	DY mm	DI mm	H mm	A mm
TC50 - For pipe JS1.0 (25.4x1.2)						
100287	KLTF-TC50-JS1.0S-85-6	50.5	85	23	6	14.5
100825	KLTF-TC50-JS1.0S-85-12	50.5	85	23	12	20.5
101697	KLTF-TC50-JS1.0S-85-25	50.5	85	23	25	33.5
101698	KLTF-TC50-JS1.0S-85-38	50.5	85	23	38	46.5
101699	KLTF-TC50-JS1.0S-85-51	50.5	85	23	51	59.5
TC50 - For pipe JS1.25 (31.8x1.2)						
100288	KLTF-TC50-JS1.25S-85-6	50.5	85	29.4	6	14.5
101198	KLTF-TC50-JS1.25S-85-12	50.5	85	29.4	12	20.5
101700	KLTF-TC50-JS1.25S-85-25	50.5	85	29.4	25	33.5
101701	KLTF-TC50-JS1.25S-85-38	50.5	85	29.4	38	46.5
101702	KLTF-TC50-JS1.25S-85-51	50.5	85	29.4	51	59.5
TC50 - For pipe JS1.5 (38.1x1.2)						
100339	KLTF-TC50-JS1.5S-85-6	50.5	85	35.7	6	14.5
101197	KLTF-TC50-JS1.5S-85-12	50.5	85	35.7	12	20.5
101415	KLTF-TC50-JS1.5S-85-25	50.5	85	35.7	25	33.5
101703	KLTF-TC50-JS1.5S-85-38	50.5	85	35.7	38	46.5
101704	KLTF-TC50-JS1.5S-85-51	50.5	85	35.7	51	59.5
TC64 - For pipe JS2.0 (50.8x1.5)						
100289	KLTF-TC64-JS2.0S-100-6	64	100	47.8	6	14.5
100333	KLTF-TC64-JS2.0S-100-12	64	100	47.8	12	20.5
101417	KLTF-TC64-JS2.0S-100-25	64	100	47.8	25	33.5
101705	KLTF-TC64-JS2.0S-100-38	64	100	47.8	38	46.5
101706	KLTF-TC64-JS2.0S-100-51	64	100	47.8	51	59.5
TC77 - For pipe JS2.5 (63.5x2.0)						
101707	KLTF-TC77-JS2.5S-112-6	77.5	112	59.5	6	14.5
100332	KLTF-TC77-JS2.5S-112-12	77.5	112	59.5	12	20.5
101708	KLTF-TC77-JS2.5S-112-25	77.5	112	59.5	25	33.5
101709	KLTF-TC77-JS2.5S-112-38	77.5	112	59.5	38	46.5
101710	KLTF-TC77-JS2.5S-112-51	77.5	112	59.5	51	59.5

Kest-Lock Tank Flange



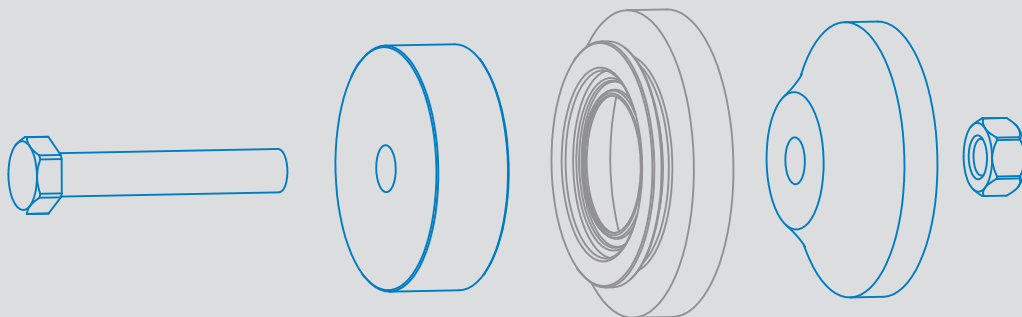
REF. NO	PRODUCT CODE	TC mm	DY mm	DI mm	H mm	A mm
TC91 - For pipe JS3.0 (76.3x2.0)						
100634	KLTF-TC91-JS3.0S-131-6	91	131	72.3	6	14.5
101711	KLTF-TC91-JS3.0S-131-12	91	131	72.3	12	20.5
101712	KLTF-TC91-JS3.0S-131-25	91	131	72.3	25	33.5
101713	KLTF-TC91-JS3.0S-131-38	91	131	72.3	38	46.5
101714	KLTF-TC91-JS3.0S-131-51	91	131	72.3	51	59.5
TC106 - For pipe JS3.5 (89.1x2.0)						
101715	KLTF-TC106-JS3.5S-146-6	106	146	85.1	6	14.5
101716	KLTF-TC106-JS3.5S-146-12	106	146	85.1	12	20.5
101717	KLTF-TC106-JS3.5S-146-25	106	146	85.1	25	33.5
101718	KLTF-TC106-JS3.5S-146-38	106	146	85.1	38	46.5
101719	KLTF-TC106-JS3.5S-146-51	106	146	85.1	51	59.5

Tank Flange Welding Tool

PRODUCT CODE	MATERIAL	TC mm
Welding tool for KLTF		
KLWT-TC25-[Standard]-[H]	Aluminium	25
KLWT-TC34-[Standard]-[H]	Aluminium	34
KLWT-TC50-[Standard]-[H]	Aluminium	50.5
KLWT-TC64-[Standard]-[H]	Aluminium	64
KLWT-TC77-[Standard]-[H]	Aluminium	77.5
KLWT-TC91-[Standard]-[H]	Aluminium	91
KLWT-TC106-[Standard]-[H]	Aluminium	106
KLWT-TC119-[Standard]-[H]	Aluminium	119



Welding tool



EXAMPLE:

Product Code for KLTF-TC91-^{Standard}JS3.0S-^H131-25 would be KLWT-TC91-^{Standard}JS3.0S-^H25

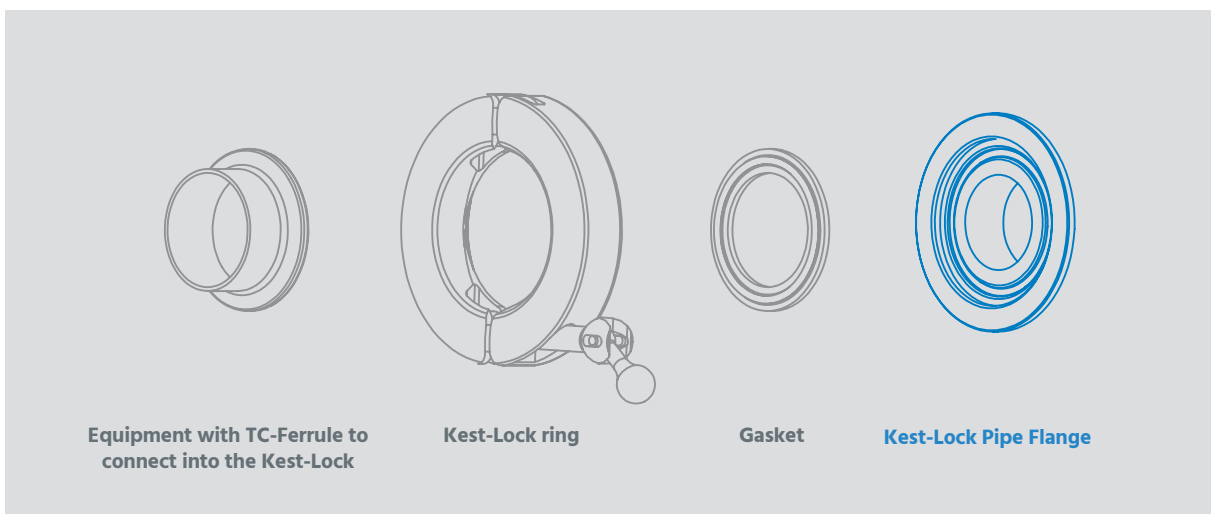
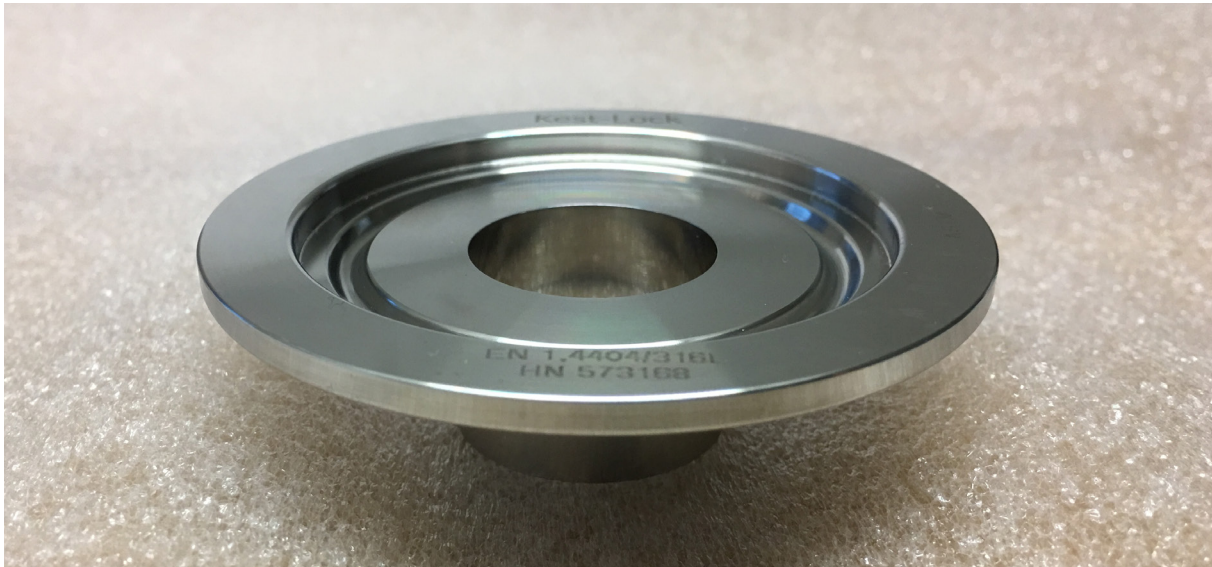


ALWAYS USE A WELDING TOOL AND FOLLOW THE WELDING GUIDE LINE WHEN INSTALLING A KEST-LOCK TANK FLANGE

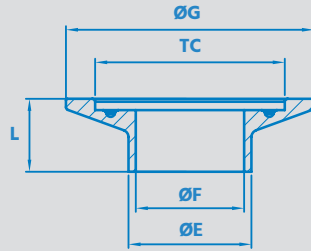
Kest-Lock Pipe Flange

SPECIFICATIONS

Material grade	EN 1.4404	ASTM 316L or ASME 316L
Material requirement	EN 10 272/10028-7	A479/A240 or SA479/SA240
Documentation	Heat Certificate 3.1 acc. to EN 10 204	
Surface finish	Ra≤0.5 μm internal (polished)	Ra≤1.6 μm outer
Design temperature	[-80°C to 200°C] [112°F to 392°F]	
Design pressure	[-1 bar(g) to + 7 bar(g)] [-14.5 psi to 101.5 psi]	
Marking	Marked with material grade and heat number	
Packing	Sealed in vacuum plastic bag, labelled with art. number and packed in a box	
Gaskets	The Kest-Lock is designed for use of standard gaskets acc. to ISO 2852 type B	
Standard	The Kest-Lock is designed for clamp couplings acc ISO 2852, ASME BPE, DIN 32 676	
Quality assurance	Each product is controlled and tested acc. to Kest Technology quality assurance system	



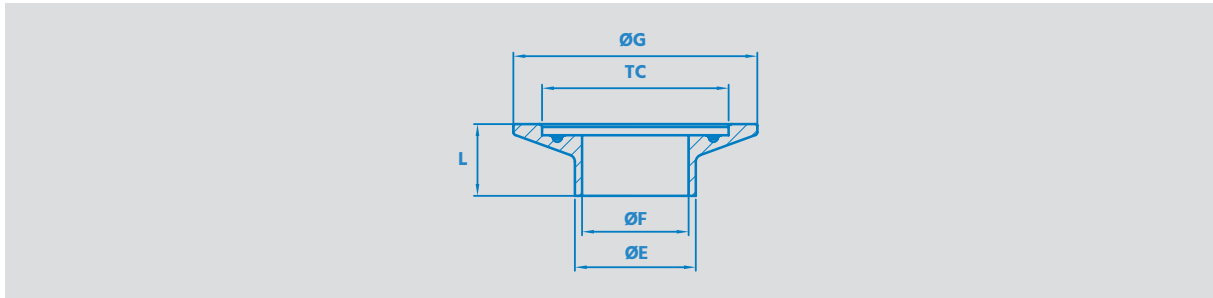
Kest-Lock Pipe Flange



REF. NO	PRODUCT CODE	TC mm	ØE mm	ØF mm	ØG mm	L mm
For pipe ASTM 269/270						
100196	KLPF-TC25-ASTM0.5-20	25	12.7	9.4	42.5	20
100197	KLPF-TC25-ASTM0.75-20	25	19.1	15.8	42.5	20
100198	KLPF-TC50-ASTM1.0-20	50.5	25.3	22.1	68	20
100199	KLPF-TC50-ASTM1.5-20	50.5	38.1	34.8	68	20
100200	KLPF-TC64-ASTM2.0-20	64	50.8	47.5	81.5	20
100201	KLPF-TC77-ASTM2.5-20	77.5	63.5	60.2	95	20
100202	KLPF-TC91-ASTM3.0-20	91	76.2	72.9	108.5	20
100358	KLPF-TC119-ASTM4.0-20	119	101.6	97.4	136.5	20

REF. NO	PRODUCT CODE	TC mm	ØE mm	ØF mm	ØG mm	L mm
For pipe ISO 1127						
100203	KLPF-TC25-ISO8-20	25	13.5	10.3	42.5	20
100204	KLPF-TC34-ISO10-20	34	17.2	14	51.5	20
100205	KLPF-TC34-ISO15-20	34	21.3	18.1	51.5	20
100206	KLPF-TC50-ISO20-20	50.5	26.9	23.7	68	20
100207	KLPF-TC50-ISO25-20	50.5	33.7	29.7	68	20
100208	KLPF-TC64-ISO32-20	64	42.3	38.3	81.5	20
100209	KLPF-TC64-ISO40-20	64	48.3	44.3	81.5	20
100210	KLPF-TC77-ISO50-20	77.5	60.3	56.3	95	20
100211	KLPF-TC91-ISO65-20	91	76.3	71.5	108.5	20

Kest-Lock Pipe Flange



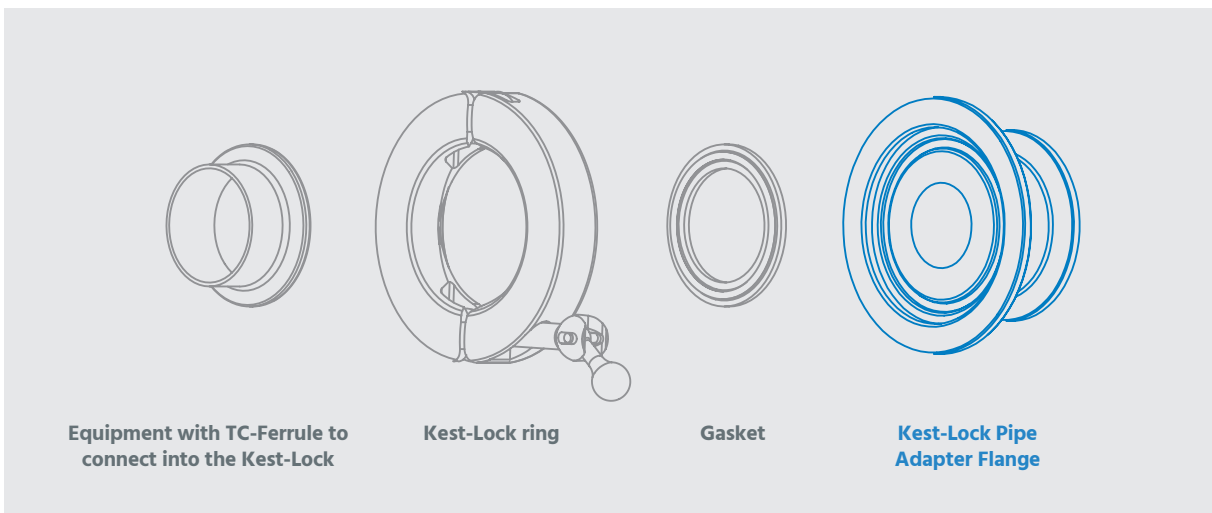
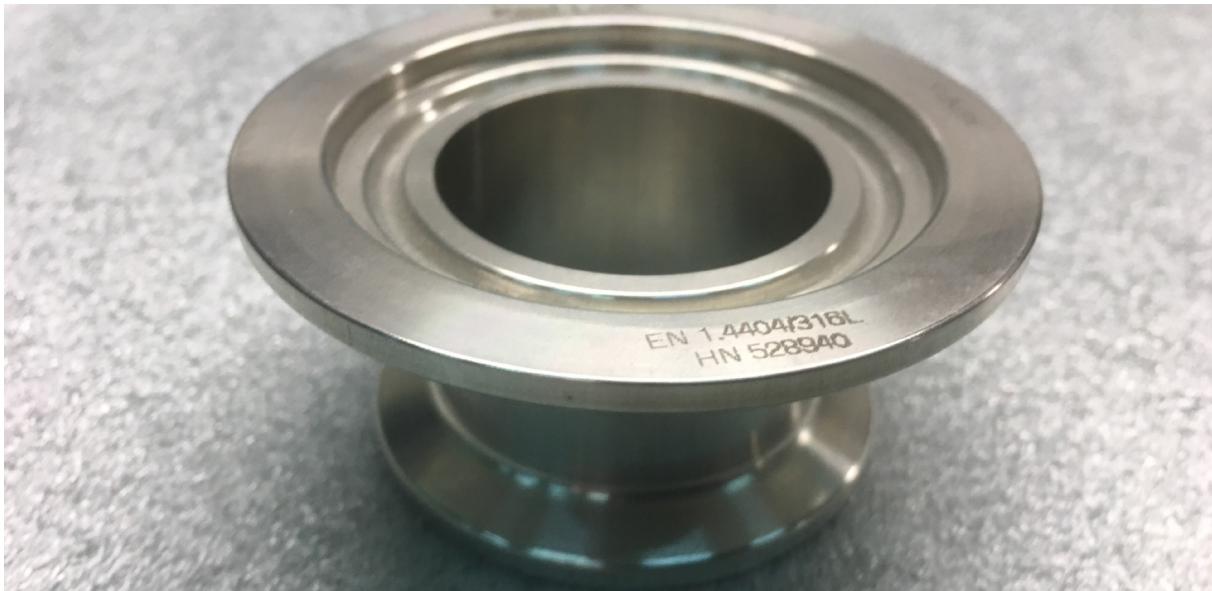
REF. NO	PRODUCT CODE	TC mm	$\varnothing E$ mm	$\varnothing F$ mm	$\varnothing G$ mm	L mm
For pipe EN 10357-A (DIN 11850-R2)						
100212	KLPF-TC34-EN10-2-20	34	13	10	51	20
100213	KLPF-TC34-EN15-2-20	34	19	16	51	20
100214	KLPF-TC34-EN20-2-20	34	23	20	51	20
100215	KLPF-TC50-EN25-2-20	50.5	29	26	68	20
100216	KLPF-TC50-EN32-2-20	50.5	35	32	68	20
100217	KLPF-TC50-EN40-2-20	50.5	41	38	68	20
100218	KLPF-TC64-EN50-2-20	64	53	50	81.5	20
100219	KLPF-TC91-EN65-1-20	91	70	66	108.5	20
101407	KLPF-TC119-EN100-1-20	119	104	100	136.5	20

REF. NO	PRODUCT CODE	TC mm	$\varnothing E$ mm	$\varnothing F$ mm	$\varnothing G$ mm	L mm
For pipe SMS 3008						
100189	KLPF-TC25-SMS12-20	25	12.0	10.0	42.5	20
100190	KLPF-TC25-SMS18-20	25	18.0	15.0	42.5	20
100191	KLPF-TC50-SMS25-20	50.5	25.0	22.6	68	20
100192	KLPF-TC50-SMS38-20	50.5	38.0	35.6	68	20
100193	KLPF-TC64-SMS51-20	64	51.0	48.6	81.5	20
100194	KLPF-TC77-SMS63-20	77	63.5	60.3	95	20
100195	KLPF-TC91-SMS76-20	91	76.1	72.9	108.5	20

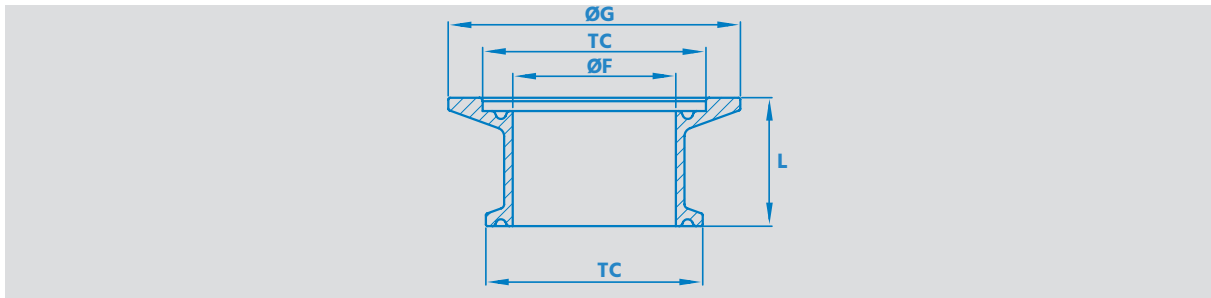
REF. NO	PRODUCT CODE	TC mm	$\varnothing E$ mm	$\varnothing F$ mm	$\varnothing G$ mm	L mm
For pipe JS IDF						
100285	KLPF-TC50-JS1.0S-20	50.5	25.4	23	68	20
100364	KLPF-TC50-JS1.25S-20	50.5	31.8	29.4	68	20
100341	KLPF-TC50-JS1.5S-20	50.5	38.1	35.7	68	20
100286	KLPF-TC64-JS2.0S-20	64	50.8	47.8	81.5	20
100365	KLPF-TC77-JS2.5S-20	77.5	63.5	59.5	95	20
100517	KLPF-TC91-JS3.0S-20	91	76.3	72.3	108.5	20
100284	KLPF-TC106-JS3.5S-20	106	89.1	85.1	121.5	20

Kest-Lock Pipe Adapter Flange

SPECIFICATIONS		
Material Grade	EN 1.4404	ASTM 316L or ASME 316L
Material requirement	EN 10 272/10028-7	A479/A240 or SA479/SA240
Documentation	Heat Certificate 3.1 acc. to EN 10 204	
Surface finish	Ra≤0.5 μm internal (polished)	Ra≤1.6 μm outer
Design Temperature	[-80°C to 200°C] [112°F to 392°F]	
Design Pressure	[-1 bar(g) to + 7 bar(g)] [-14.5 psi to 101.5 psi]	
Marking	Marked with material grade and heat number	
Packing	Sealed in vacuum plastic bag, labelled with art. number and packed in a box	
Gaskets	The Kest-Lock is designed for use of standard gaskets acc. to ISO 2852 type B	
Standard	The Kest-Lock is designed for clamp couplings acc ISO 2852, ASME BPE, DIN 32 676	
Quality Assurance	Each product is controlled and tested acc. to Kest Technology quality assurance system	



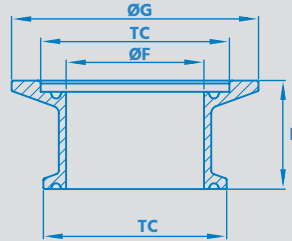
Kest-Lock Pipe Adapter Flange



REF. NO	PRODUCT CODE	TC mm	ØF mm	ØG mm	L mm
For pipe ASTM A 269/270					
101722	KLPAF-TC25-ASTM0.5-30	25	9.4	42.5	30
100486	KLPAF-TC25-ASTM0.75-30	25	15.8	42.5	30
100254	KLPAF-TC50-ASTM1.0-30	50.5	22.1	68	30
100251	KLPAF-TC50-ASTM1.5-30	50.5	34.8	68	30
100245	KLPAF-TC64-ASTM2.0-30	64	47.5	81.5	30
101386	KLPAF-TC77-ASTM2.5-30	77.5	60.2	95	30
101723	KLPAF-TC91-ASTM3.0-30	91	72.9	108.5	30
101724	KLPAF-TC119-ASTM4.0-30	119	97.4	136.5	30

REF. NO	PRODUCT CODE	TC mm	ØF mm	ØG mm	L mm
For pipe ISO 1127					
101725	KLPAF-TC25-ISO8-30	25	10.3	42.5	30
101726	KLPAF-TC34-ISO10-30	34	14	51.5	30
101727	KLPAF-TC34-ISO15-30	34	18.1	51.5	30
101731	KLPAF-TC50-ISO20-30	50.5	23.7	68	30
101732	KLPAF-TC50-ISO25-30	50.5	29.7	68	30
101733	KLPAF-TC64-ISO32-30	64	38.3	81.5	30
101734	KLPAF-TC64-ISO40-30	64	44.3	81.5	30
101735	KLPAF-TC77-ISO50-30	77.5	56.3	95	30
101736	KLPAF-TC91-ISO65-30	91	71.5	108.5	30

Kest-Lock Pipe Adapter Flange



REF. NO	PRODUCT CODE	TC mm	ØF mm	ØG mm	L mm
For pipe EN 10357-A (DIN 11850-R2)					
101737	KLPAF-TC34-EN10-30	34	10	51	30
101738	KLPAF-TC34-EN15-30	34	16	51	30
100349	KLPAF-TC34-EN20-30	34	20	51	30
100331	KLPAF-TC50-EN25-30	50.5	26	68	30
101739	KLPAF-TC50-EN32-30	50.5	32	68	30
101740	KLPAF-TC50-EN40-30	50.5	38	68	30
101041	KLPAF-TC64-EN50-30	64	50	81.5	30
101741	KLPAF-TC91-EN65-30	91	66	108.5	30
101743	KLPAF-TC119-EN100-30	119	100	136.5	30

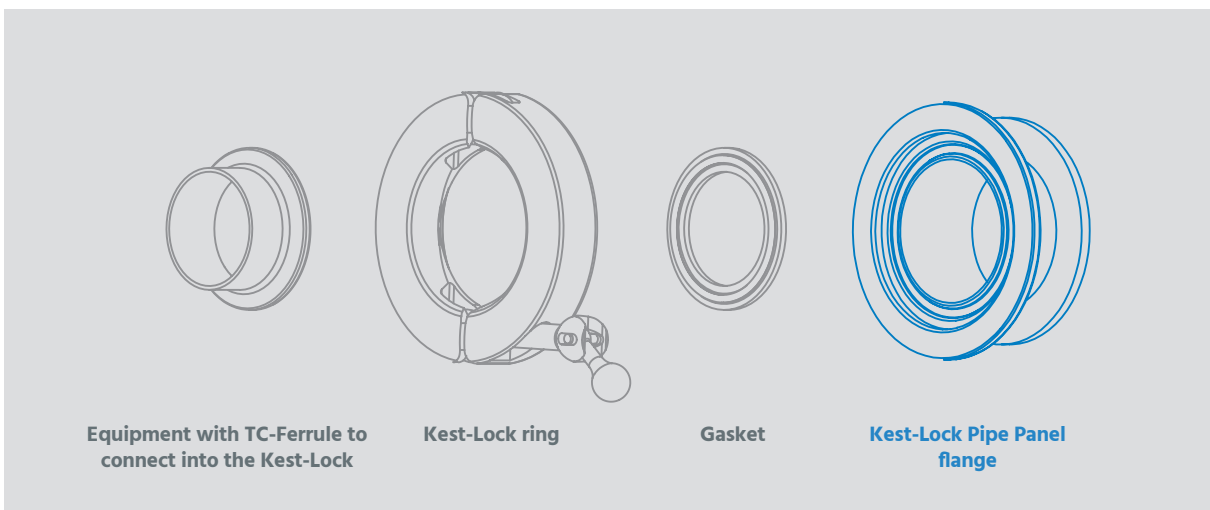
REF. NO	PRODUCT CODE	TC mm	ØF mm	ØG mm	L mm
For pipe SMS 3008					
100315	KLPAF-TC25-SMS12-30	25	10	42.5	30
101720	KLPAF-TC25-SMS18-30	25	15	42.5	30
100252	KLPAF-TC50-SMS25-30	50.5	22.6	68	30
100246	KLPAF-TC50-SMS38-30	50.5	35.6	68	30
100234	KLPAF-TC64-SMS51-30	64	48.6	81.5	30
101721	KLPAF-TC77-SMS63-30	77.5	60.3	95	30
100271	KLPAF-TC91-SMS76-30	91	72.9	108.5	30

REF. NO	PRODUCT CODE	TC mm	ØF mm	ØG mm	L mm
For pipe JS IDF					
101744	KLPAF-TC50-JS1.0S-30	50.5	23	68	30
101745	KLPAF-TC50-JS1.25S-30	50.5	29.4	68	30
101746	KLPAF-TC50-JS1.5S-30	50.5	35.7	68	30
101747	KLPAF-TC64-JS2.0S-30	64	47.8	81.5	30
101748	KLPAF-TC77-JS2.5S-30	77.5	59.5	95	30
101749	KLPAF-TC91-JS3.0S-30	91	72.3	108.5	30
101750	KLPAF-TC106-JS3.5S-30	106	85.1	121.5	30

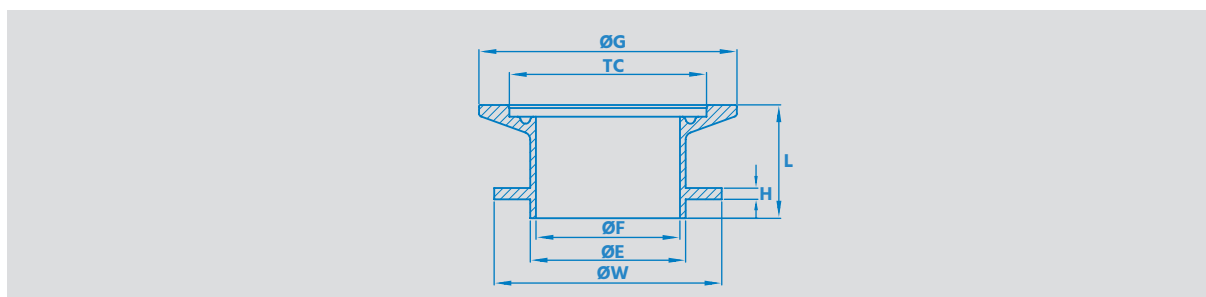
Kest-Lock Pipe Panel Flange

SPECIFICATIONS

Material Grade	EN 1.4404	ASTM 316L or ASME 316L
Material requirement	EN 10 272/10028-7	A479/A240 or SA479/SA240
Documentation	Heat Certificate 3.1 acc. to EN 10 204	
Surface finish	Ra≤0.5 µm internal (polished)	Ra≤1.6 µm outer
Design Temperature	[-80°C to 200°C] [112°F to 392°F]	
Design Pressure	[-1 bar(g) to + 7 bar(g)] [-14.5 psi to 101.5 psi]	
Marking	Marked with material grade and heat number	
Packing	Sealed in vacuum plastic bag, labelled with art. number and packed in a box	
Gaskets	The Kest-Lock is designed for use of standard gaskets acc. to ISO 2852 type B	
Standard	The Kest-Lock is designed for clamp couplings acc ISO 2852, ASME BPE, DIN 32 676	
Quality Assurance	Each product is controlled and tested acc. to Kest Technology quality assurance system	



Kest-Lock Pipe Panel Flange

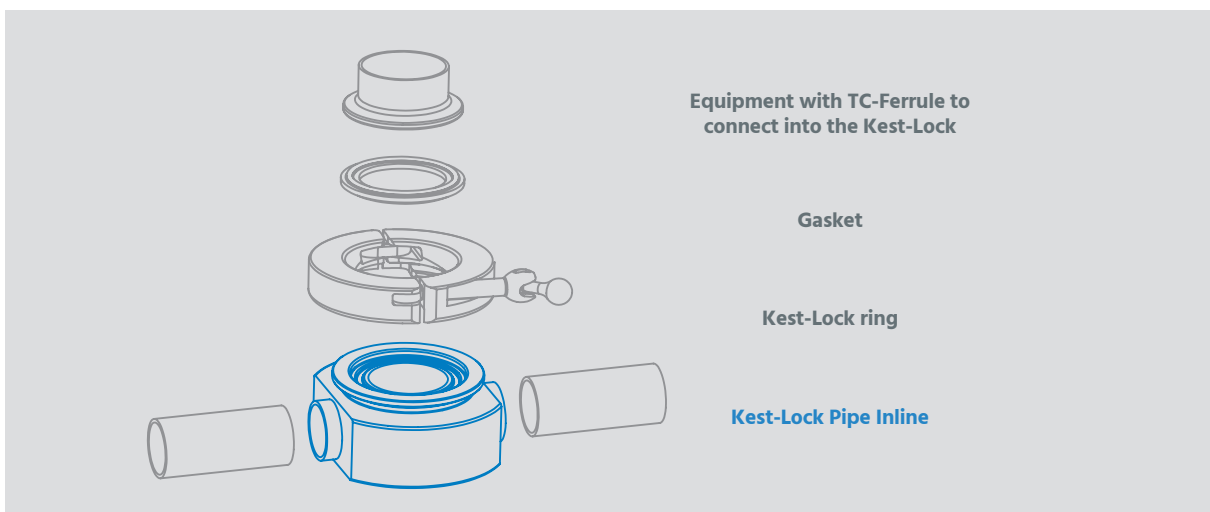


REF. NO	PRODUCT CODE	TC mm	ØE mm	ØF mm	ØW mm	H mm	ØG mm	L mm
For pipe EN 10357-A (DIN 11850-R2)								
101517	KLPPF-TC34-EN15-30	34	19	16	40	3	51.5	30
101498	KLPPF-TC34-EN20-30	34	23	20	40	3	51.5	30
101499	KLPPF-TC50-EN25-30	50.5	29	26	60	3	68	30

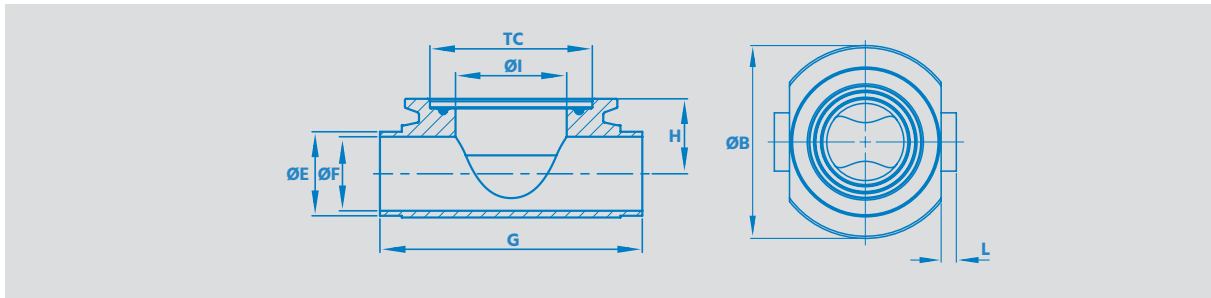
Kest-Lock Pipe Inline

SPECIFICATIONS

Material Grade	EN 1.4435	ASTM 316L or ASME 316L
Material requirement	EN 10 272/10028-7	A479/A240 or SA479/SA240
Documentation	Heat Certificate 3.1 acc. to EN 10 204	
Surface finish	Ra≤0.5 µm internal (polished)	Ra≤1.6 µm outer
Design Temperature	[-80°C to 200°C] [112°F to 392°F]	
Design Pressure	[-1 bar(g) to + 7 bar(g)] [-14.5 psi to 101.5 psi]	
Marking	Marked with material grade and heat number	
Packing	Sealed in vacuum plastic bag, labelled with art. number and packed in a box	
Gaskets	The Kest-Lock is designed for use of standard gaskets acc. to ISO 2852 type B	
Standard	The Kest-Lock is designed for clamp couplings acc ISO 2852, ASME BPE, DIN 32 676	
Quality Assurance	Each product is controlled and tested acc. to Kest Technology quality assurance system	



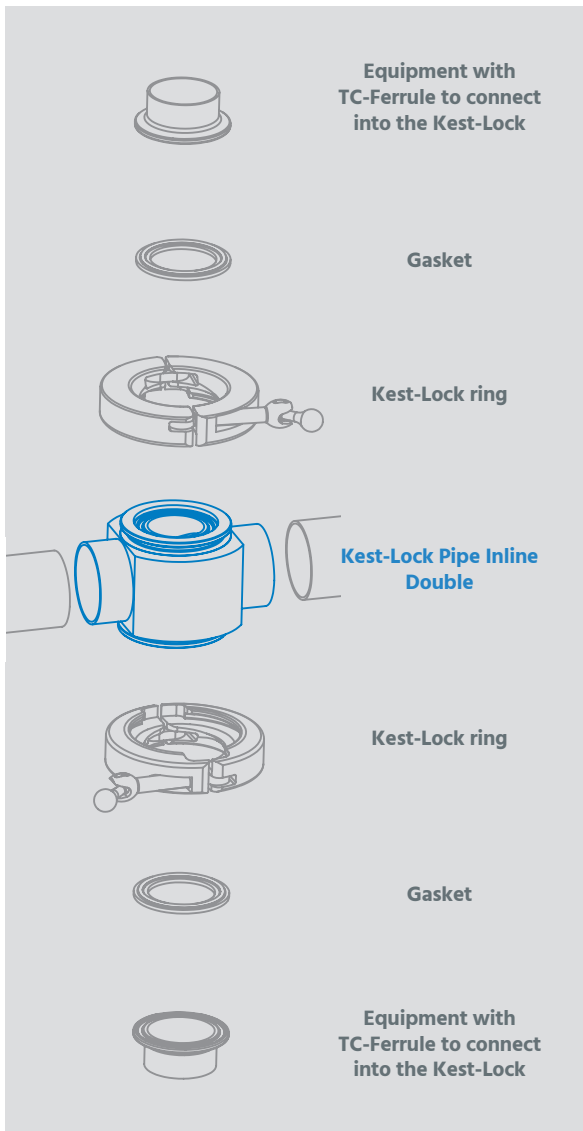
Kest-Lock Pipe Inline



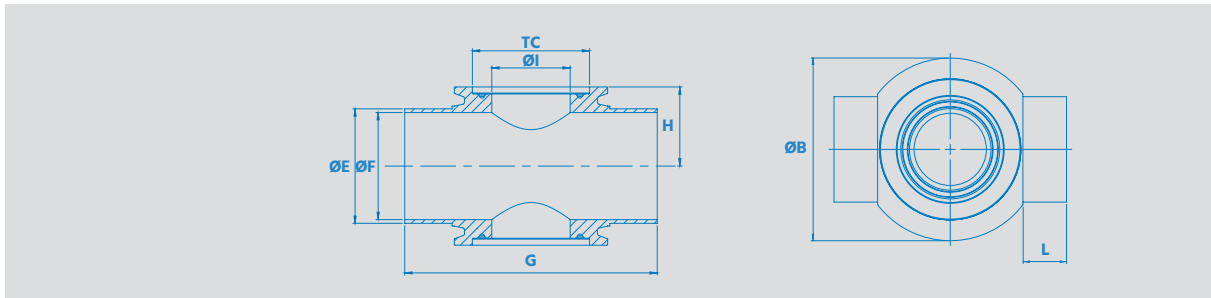
REF. NO	PRODUCT CODE	TC mm	ØI mm	ØE mm	ØF mm	G mm	H mm	L mm	ØB mm
For pipe ASTM A 269/270									
100426	KLPI-TC50-ASTM1.5-ASTM0.5-BE	50.5	34.8	12.7	9.4	112	16.05	21	85
100312	KLPI-TC50-ASTM1.5-ASTM0.75-BE	50.5	34.8	19.1	15.8	112	20	21	85
100311	KLPI-TC50-ASTM1.5-ASTM1.0-BE	50.5	34.8	25.4	22.1	112	22.4	21	85
100313	KLPI-TC50-ASTM1.5-ASTM1.5-BE	50.5	34.8	38.1	34.8	112	28.75	21	88
100513	KLPI-TC50-ASTM1.5-ASTM2.0-BE	50.5	34.8	50.8	47.5	112	35.1	21	93
100745	KLPI-TC50-ASTM1.5-ASTM2.5-BE	50.5	34.8	63.5	60.2	112	41.45	21	100

Kest-Lock Pipe Inline Double

SPECIFICATIONS		
Material Grade	EN 1.4435	ASTM 316L or ASME 316L
Material requirement	EN 10 272/10028-7	A479/A240 or SA479/SA240
Documentation	Heat Certificate 3.1 acc. to EN 10 204	
Surface finish	Ra≤0.5 µm internal (polished)	Ra≤1.6 µm outer
Design Temperature	[-80°C to 200°C] [112°F to 392°F]	
Design Pressure	[-1 bar(g) to + 7 bar(g)] [-14.5 psi to 101.5 psi]	
Marking	Marked with material grade and heat number	
Packing	Sealed in vacuum plastic bag, labelled with art. number and packed in a box	
Gaskets	The Kest-Lock is designed for use of standard gaskets acc. to ISO 2852 type B	
Standard	The Kest-Lock is designed for clamp couplings acc ISO 2852, ASME BPE, DIN 32 676	
Quality Assurance	Each product is controlled and tested acc. to Kest Technology quality assurance system	



Kest Lock Pipe Inline Double

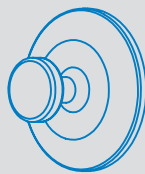


REF. NO	PRODUCT CODE	TC mm	ØI mm	ØE mm	ØF mm	G mm	H mm	L mm	ØB mm
For pipe ASTM A 269/270									
100425	KLPID-TC50-ASTM1.5-ASTM0.50-BE	50.5	34.8	12.7	9.4	112	16.05	21	85
100320	KLPID-TC50-ASTM1.5-ASTM0.75-BE	50.5	34.8	19.1	15.8	112	20	21	85
100329	KLPID-TC50-ASTM1.5-ASTM1.0-BE	50.5	34.8	25.4	22.1	112	22.4	21	85
100512	KLPID-TC50-ASTM1.5-ASTM1.5-BE	50.5	34.8	38.1	34.8	112	28.75	21	88
100514	KLPID-TC50-ASTM1.5-ASTM2.0-BE	50.5	34.8	50.8	47.5	112	35.1	21	93
100746	KLPID-TC50-ASTM1.5-ASTM2.5-BE	50.5	34.8	63.5	60.2	112	41.45	21	100

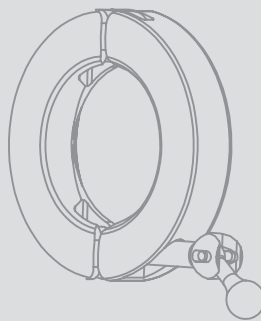
Blind Cap with knob

SPECIFICATIONS

Material Grade	EN 1.4404	ASTM 316L or ASME 316L
Material requirement	EN 10 272/10028-7	A479/A240 or SA479/SA240
Documentation	Heat Certificate 3.1 acc. to EN 10 204	
Surface finish	Ra≤0.5 µm internal (polished)	Ra≤1.6 µm outer
Design Temperature	[-80°C to 200°C] [112°F to 392°F]	
Design Pressure	[-1 bar(g) to + 7 bar(g)] [-14.5 psi to 101.5 psi]	
Marking	Marked with material grade and heat number	
Packing	Sealed in a vacuum plastic bag, labelled with art. number and packed in a box	
Gaskets	The Kest-Lock is designed for use of standard gaskets acc. to ISO 2852 type B	
Standard	The Kest-Lock is designed for clamp couplings acc ISO 2852, ASME BPE, DIN 32 676	
Quality Assurance	Each product is controlled and tested acc. to Kest Technology quality assurance system	



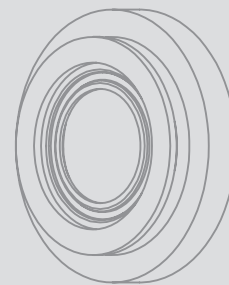
Blind Cap with knob



Kest-Lock ring

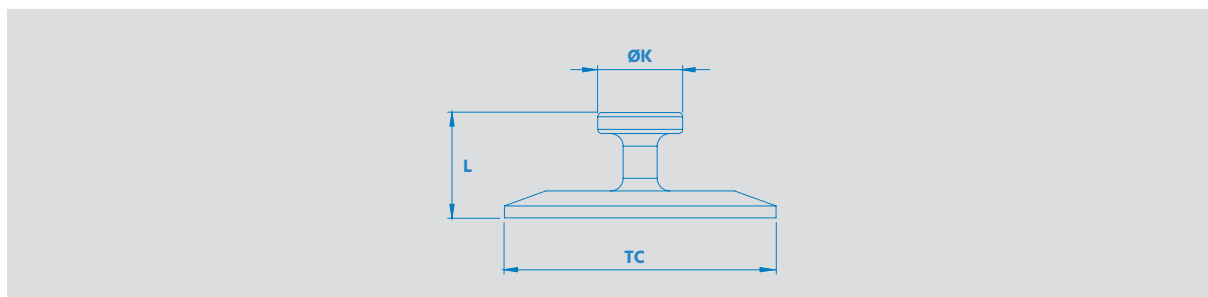


Gasket



Kest-Lock flange

Blind Cap with knob



REF. NO	PRODUCT CODE	TC mm	ØK mm	L mm
KLBF				
100220	KLBF-TC25	25	20	25
100221	KLBF-TC34	34	20	25
100222	KLBF-TC50	50.5	20	25
100223	KLBF-TC64	64	20	25
100224	KLBF-TC77	77.5	20	25
100225	KLBF-TC91	91	20	25
100226	KLBF-TC106	106	20	25
100370	KLBF-TC119	119	20	25



kest